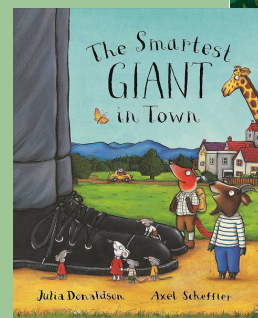
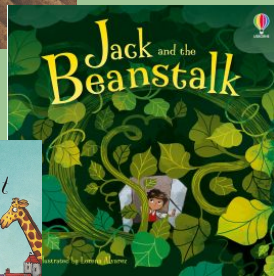
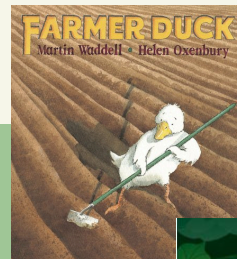


LRR

To predict what might happen from what has been read so far.
 To discuss word meanings and link new meanings to words already known.
 To retell well known stories such as fairy tales and traditional stories.
 To make inferences from the text based on what is said and done.
 To explain clearly their understanding of what is read to them.
 To appreciate rhymes and poems and to recite some by heart.

WRITING

This half term we will be writing short stories about:
 Weeks 1 and 2 - Farmer Duck
 Weeks 3 and 4 - Jack and the Beanstalk
 Weeks 5 and 6 - The Smartest Giant in Town
 We will then write a recount of our walk into Wellington.

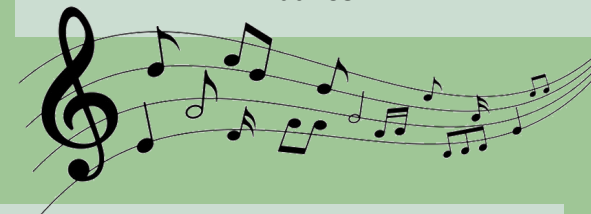


PE

Week 1 - To perform a basic underarm throw.
 Week 2 - To perform a basic throw and a longer distance.
 Week 3 - To know the correct way to catch a ball.
 Week 4 - To receive a large ball using what I was taught in the previous lesson.
 Week 5 - To receive a smaller ball.
 Week 6 - To perform a range of throws.
 Week 7 - To throw and catch a range of balls at increasing distances.

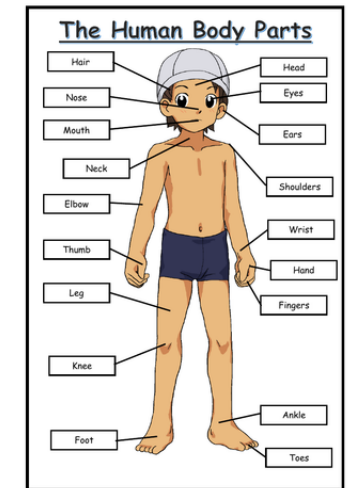
MUSIC

To know the meaning of pulse and find a steady pulse.
 To clap the pulse to different tempos.
 To walk and move to a steady beat to different tempos.
 To play a steady beat.
 To explore percussion sounds to enhance storytelling
 To be able to respond to the pulse in recorded/live music through movement and dance.



SCIENCE - HUMAN BODY

To be able to identify, name draw and label the basic parts of the human body.
 To be able to identify, name draw and label the basic parts of the human body.
 To identify, name, draw and label the basic parts of the human body and say which part of the body is associated with each sense.
 To describe and compare a variety of common animals.



GEOGRAPHY

To use simple fieldwork and observational skills to study the geography of the school and its grounds.
 To create a simple map of our schoolgrounds.
 To use basic geographical vocabulary to refer to key human and physical features when walking through Wellington.
 To use plan perspectives to recognise human and physical features of a town.
 To use aerial photos and plan perspectives to recognise human and physical features in Wellington.
 To devise a simple map of our local area and use basic symbols in a key.
 To use basic geographical vocabulary to refer to key physical and human features when walking through Ironbridge.

MATHS

Week 1 - 3: Place value within 10
 Week 4: Geometry
 Week 5 - 8: Addition and subtraction within 10

RE

This half term, we are learning to retell the Christian Creation story and explore how Christians behave towards nature and the environment.

PSHE - CHANGING ME

Help others to feel welcome
 Try to make our school community a better place
 Think about everyone's right to learn
 Care about other people's feelings
 Work well with others
 Choose to follow the Learning Charter



COMPUTING

To know that my personal information is special.
 To know who to trust and who not to trust.
 To know what is trustworthy and what is not when using the internet.
 To understand warning signs to look out for when using the internet.
 To know what to do in an unsafe situation online.
 To understand how to stay safe online by making an 'Internet Safety' poster.

ART - PAINTING

To be able to use a paint brush and experiment with brushstrokes.
 To know the primary colours.
 To begin to understand how to mix primary colours together to make secondary colours.
 To understand what printing is.
 To look at and explore the work of Kandinsky.
 To paint a picture that is inspired by Kandinsky's artwork.
 To use digital art on the computer to paint a picture inspired by Kandinsky.

