

## LRR

To learn to appreciate poetry/rhymes.  
To understand the particular characteristics of fairy tales and traditional stories.  
To link what I read to my own experiences.  
To understand the particular characteristics of fairy tales and traditional stories  
To discuss the significance of the title and events.  
To participate in discussion about what is read, taking turns, and listening to others.

## WRITING

This half term we will be writing short stories about:  
Weeks 1 and 2 - The Way Back Home  
Weeks 3 and 4 - Brownilocks and the Three Bowls of Cornflakes  
Weeks 5, 6 and 7 - The Jolly Christmas Postman

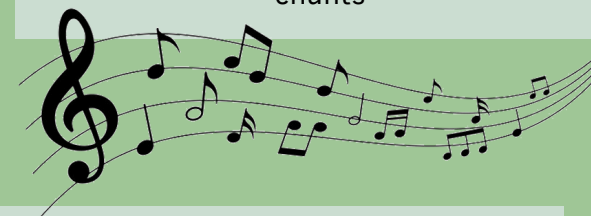


## PE

To develop the skill of balancing.  
To develop coordination.  
To develop accuracy when throwing and rolling.  
To develop the ability to run whilst avoiding obstacles.  
To develop agility.  
To increase coordination, balance, and agility levels.  
To increase coordination, balance, and agility levels.

## MUSIC

To use body percussion to play short copycat rhythm patterns led by teachers  
To know the meaning of ostinato  
To use classroom percussion to play an ostinato  
To play word-pattern chants  
Playing games to practice syllables  
To create their own word-pattern charts  
To perform their own word-pattern chants



## SCIENCE - TYPES OF ANIMALS

To identify and name a variety of common animals.  
To identify domestic and wild animals and what they eat.  
To identify some features of fish, amphibians, reptiles, birds and mammals.  
To identify animals as mammals, birds, fish, reptiles and amphibians.  
To identify and name a variety of common animals that are carnivores, herbivores and omnivores.  
To identify and name a variety of common animals that are carnivores, herbivores and omnivores.

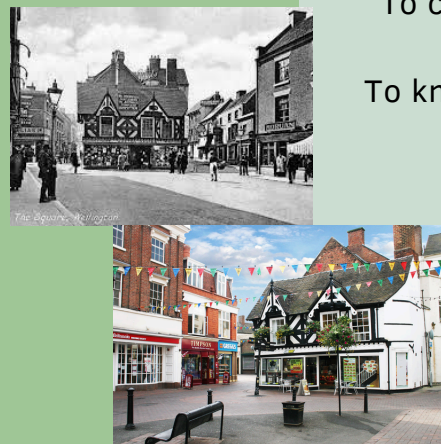


## MATHS

Week 1: Place Value  
Week 2-5: Addition and Subtraction (Within 20)  
Week 6: Measurement (Time)  
Week 7: Number and Place Value

## HISTORY

To know what Wellington is like now.  
To know what Wellington was like in the past.  
To compare what the Wellington market was like in the past to now.  
To know who Ann Bowring was and how she helped people living in Wellington.  
To know that Telford is a new town  
To know where the name 'Telford' came from.  
Enquiry endpoint: How has our local area changed?



## DESIGN TECHNOLOGY

To design a house construction using pictures and labelling to plan my own ideas, following a simple design criteria.  
To explain what I will be making and how  
To measure and mark out cardboard pieces using a ruler.  
To use scissors, glue and tape to shape and join cardboard parts safely.  
-To talk about my work, linking it to what I was asked to do.  
-To compare my house with the designs of others in the class.  
To begin to discuss what could make my design better.



## RE

What is the most significant part of the Nativity story for Christians today?  
To understand the symbolism in the Christmas story and think about what the different parts mean to Christians today.



## PSHE - CELEBRATING DIFFERENCES

I can identify similarities between people in my class.  
I can identify differences between people in my class.  
I can tell you what bullying is.  
I know some people who I could talk to if I was feeling unhappy or being bullied  
I know how to make new friends  
I can tell you some ways I am different from my friends



## COMPUTING

To identify technology  
To identify a computer and its main parts  
To use a mouse in different ways  
To use a keyboard to type on a computer  
To use the keyboard to edit text  
To create rules for using technology responsibly

