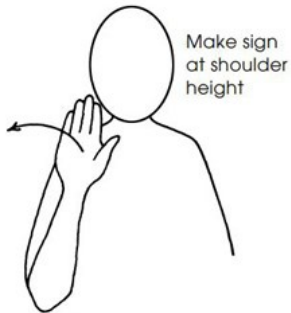


Wrekin View SEND Newsletter



Hello/ Hi

First of all, I want to say a massive thank you to everyone who has welcomed me to Wrekin View Primary, I feel like I have been here for longer than 6 weeks and I am looking forward to working with more children and families over the coming weeks.

In a blink of an eye, Spring 1 has been and gone. We have had some fantastic opportunities throughout school to engage and support learning and the children have done us proud. This has included the introduction of LYFTA (an immersive experience aiming to 'bring connection, understanding and belonging into every classroom'), debate team sessions, craft clubs, sporting events and much, much more. We cannot wait to see what adventures are waiting for us in Spring 2.

Enjoy your half term break, it is well deserved!

Mrs Taylor-Ward

Get active this
half term!



[Holiday Activity Programme - Telford and Wrekin Leisure Services](#)



[Urban games - Urban games - Telford & Wrekin Council](#)



The Local Offer aims to bring together useful information across education, health and social care within one website. You can find information, advice and guidance and a range of local service providers who support children and young people with Special Educational Needs and Disabilities (SEND). [SEND - Local offer](#)

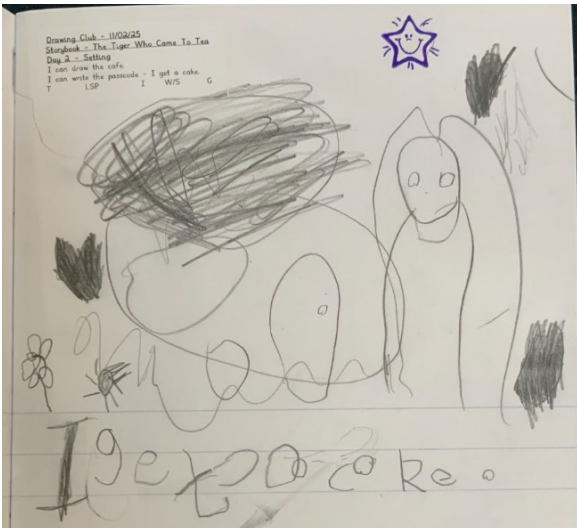


[Together We Can Make a Difference](#) PODs is a charity aimed at supporting families living in Telford & Wrekin who have a child/young person aged 0-25 with an additional need or disability, regardless of whether they have an official diagnosis or not.

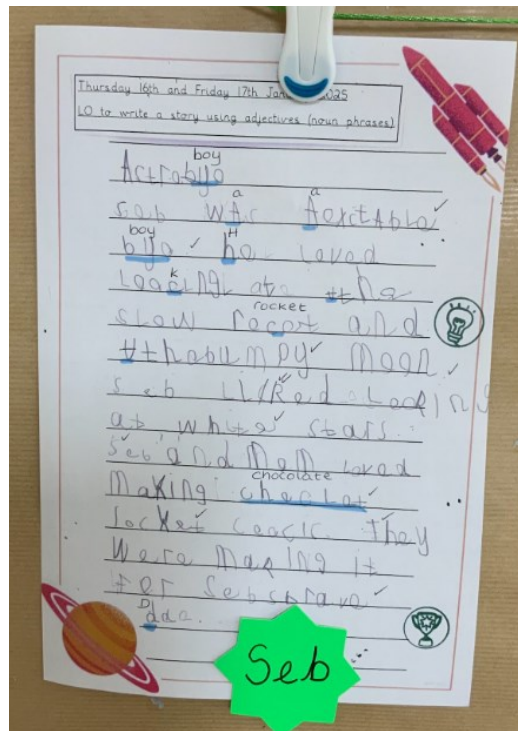
If you have any questions or queries regarding SEND in school, please email Mrs Taylor-Ward (Special Education Needs Coordinator) at:

send.wrekinview@lct.education

We love our learning



Myra in Reception used her phonics knowledge to help write the sentence 'I get a cake' during Drawing Club. Well done Myra!



Language class have been looking at different stories this half term including Astro-Girl. You can listen to this story online:

[astro-girl - Google Search](#)

SEND attendance has risen from 93.9% in the autumn term to 94.1% this half term. If this continues we can aim for 95% by the end of the spring term!

Please note that Provision Maps for the next cycle have been sent out via email; you can reply to the email with parent comments and these will be added to the files. If you have not received one and believe that you should have received one, please get in touch.

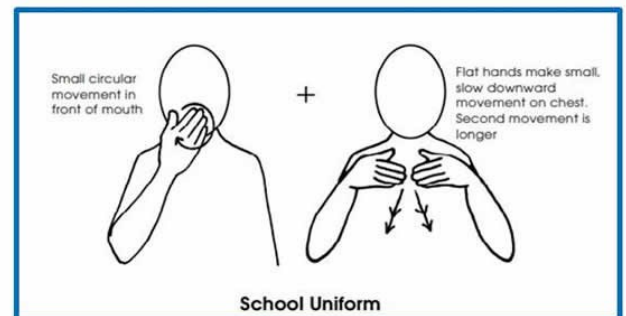
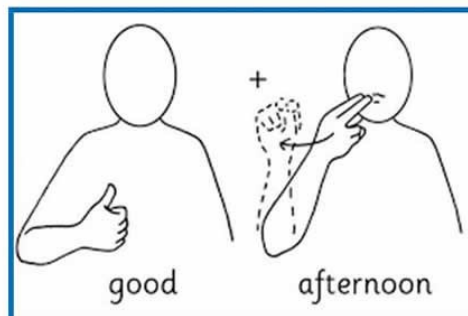
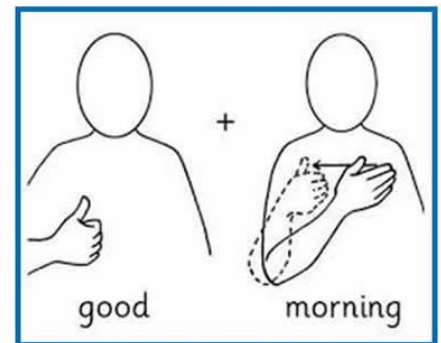
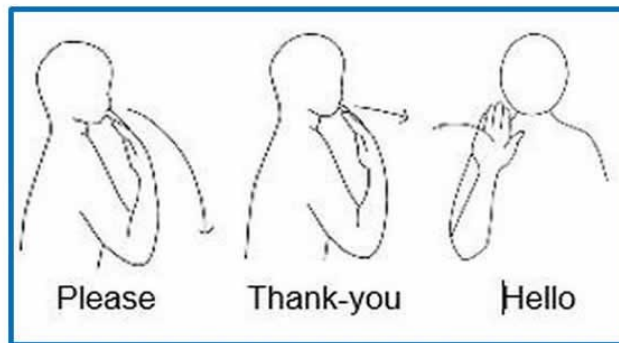
Let's learn to sign



Makaton

[Home](#)

makaton.org



Our mission is to provide a warm, welcoming, and safe learning environment that fosters the development of every pupil. Our vision is to cultivate an environment where every pupil becomes a happy, successful, and curious communicator.

General email: wrekinview@lct.education
 SENCO email: send.wrekinview@lct.education
 Telephone: 01952 388088
 Website: <https://wrekinview.lct.education/>



Follow us on Facebook:
facebook.com/Wrekinviewprimary
 Follow us on Instagram:
[@viewwrekin](https://www.instagram.com/viewwrekin)