

LRR

To predict what might happen from what has been read so far.
To discuss word meanings and link new meanings to words already known.

To retell well known stories such as Fairy tales and traditional stories.
To make inferences from the text based on what is said and done.

To explain clearly their understanding of what is read to them. To appreciate rhymes and poems and to recite some by heart.



WRITING

This half term we will be writing short stories about:

- Farmer Duck
- The Smartest Giant in Town

We will also write a recount of our walk into Wellington.

We will be looking at sentence rehearsal and construction. We will think about capital letters, full stops, finger spaces and spelling rules.



PE

Week 1 - To perform a basic underarm throw.

Week 2 - To perform a basic throw and a longer distance.

Week 3 - To know the correct way to catch a ball.

Week 4 - To receive a smaller ball.

Week 6 - To perform a range of throws.

Week 7 - To throw and catch a range of balls at increasing distances.



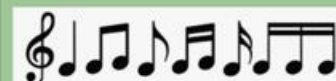
MUSIC

This half term we will be writing To echo (copy) sing following a leader.

To show the shape of the pitch with actions.

To sing using mi-re-do.

To listen to and discuss music based on the pitch, tone, feeling and lyrics.



SCIENCE - HUMAN BODY

To be able to identify, name, draw and label the basic parts of the human body.

To be able to say which part of the body is associated with which sense. To describe and compare a variety of common animals.



MATHS

Place value within 10

Geometry

Addition and Subtraction within 10



GEOGRAPHY - WELLINGTON

To use simple fieldwork and observational skills to study the geography of the school and its grounds.

To create a simple map of our school grounds.

To use basic geographical vocabulary to refer to human and physical features when walking through Wellington.

To use plan perspectives to recognise human and physical features of a town.

To use aerial photos and plan perspectives to recognise human and physical features in Wellington.

To devise a simple map of our local area and use symbols in a key.



COMPUTING

To know that my personal information is special.

To know who I can trust and who not to trust.

To know what is trustworthy and what is not when using the internet.

To understand warning signs to lookout for when using the internet.

To know what to do in an unsafe situation online.

To understand how to stay safe online by making an 'Internet Safety' poster.

RE



This half term, we are learning to re-tell the Christmas Creation story and explore how Christians behave towards nature and the environment.

PSHE - RELATIONSHIPS

People Who Care for Me

What Is a Family?

Family and me - how to get help if I am worried about a family member, what makes my family special and what events do my family celebrate.

All About Bodies (Private Body Parts)

My Body Belongs to Me (Unwanted Touch)

Asking for Permission



ART - PAINTING

To be able to use a paintbrush and experiment with brushstrokes.

To know the primary colours.

To begin to understand how to mix primary colours together to make secondary colours.

To understand what printing is.

To look at and explore the work of Kandinsky.

To paint a picture that is inspired by Kandinsky's artwork.

To use digital art on the computer to paint a picture inspired by Kandinsky.

